

### CERTIFICATE OF ANALYSIS

#### Large-scale Plasmid DNA

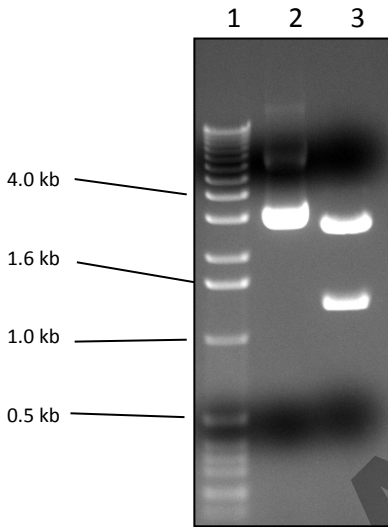
Plasmid Name: pXXXXX

Lot Number: NTC-XXXXXXXX

<b>Company:</b>	XXXXX	<b>Street:</b>	XXXXX
<b>PO#:</b>	XXXXX	<b>City:</b>	XXXXX
<b>Date:</b>	XX/XX/XXX	<b>Phone:</b>	XXXXX

Plasmid Name	Lot Number:	Quantity (mg)	mg/mL
pXXXXX	NTC-XXXXXXXX	XXX mg	X.XX mg/mL
Formulation	Storage Conditions	Notes	
TE pH 8.0	-20°C		

#### Gel Validation (QC002):



Lane	Sample	Band Size (kb)	Result
1	Ladder	1.0 kb ladder	
2	pXXXXX	XXX bp	Pass
3	pXXXXX <i>Digest 1</i>	XXX & XXX bp	Pass

Notes

Test	Specification	Result
Appearance	Clear, Colorless Solution	Clear, Colorless Solution
Identity: restriction digest	Compares to theoretical	Compares to theoretical
Concentration (A260)	X mg/ml (customer specification)	X.XX mg/mL
Purity (A260/A280 ratio)	1.7-2.0	1.853
Homogeneity (agarose gel)	> 90% Supercoiled Plasmid	> 90%
Genomic DNA (RT-PCR)	< 5%	0.63%
RNA (agarose gel)	None detected (< 1%)	< 1%
Endotoxin (USP LAL assay)	< 40 EU/mg	< 2 EU/mg

Comments:

Quality Control:

Date:

Reviewed by:

Date: